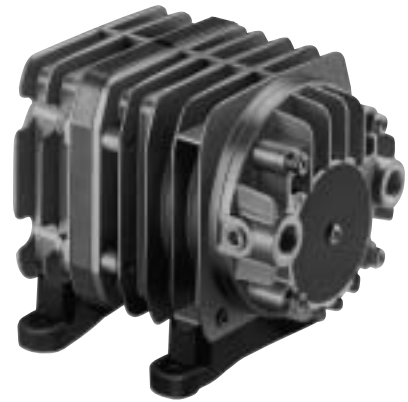


# LINEAR

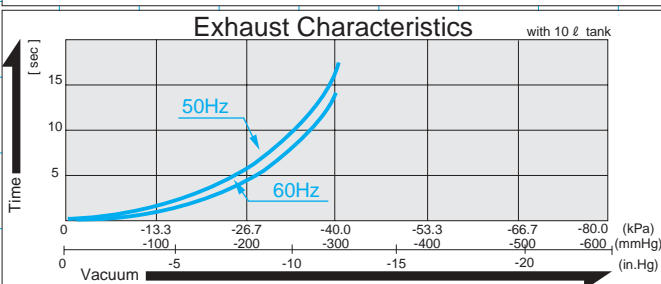
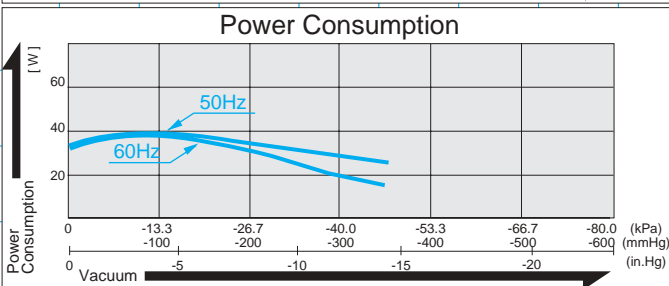
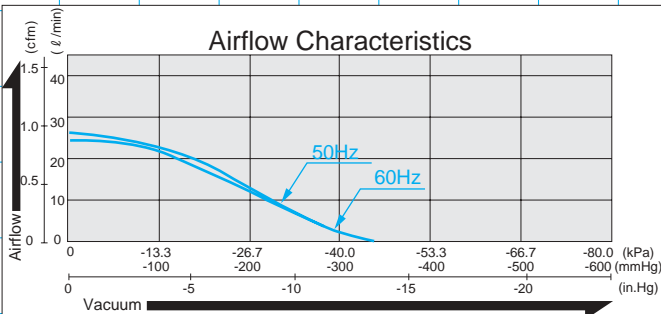


MOTOR FREE  
PISTON SYSTEM



# VP0435A

## Airflow & Power Consumption

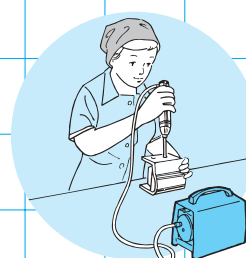


## Specifications

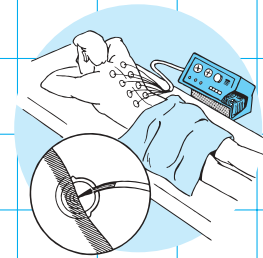
	(SI)	(EURO)	(U.S.A.)
Attainable Vacuum	-46.7 kPa (-350 mmHg)	-467 mbar	-13.78 in.Hg
Free Air Displacement	25 l/min		0.88 cfm
Rated Voltage	115 V, AC or 230 V, AC		
Power Consumption	39 W		
Rated Frequency	60 Hz or 50 Hz		
Life Expectancy	3,000 hours		
Noise Level	50 dB/m		
Inlet	ISO Rc 1/4 (female threaded)		
Outlet	ISO Rc 1/4 (female threaded)		
Duty Cycle	Continuous		
Coil Insulation Class	B or its equivalent (JETL) / UL		
Mounting Dimensions	68 (L) x 84 (W) mm		
Gross Weight	2.3 kg		5.1 Lbs.
Leadwire Length	200 mm		7-7/8"

\* Life expectancy is the expected accumulated period of time during which the compressor will maintain the above specifications. Contact your supplier for details of the conditions of use under which the values and numbers stated herein are maintained.

## Application Examples



Machine Screw Feeder



Medical Cup Suction

## Sketch Drawing and Mounting Dimensions Diagram (mm)

