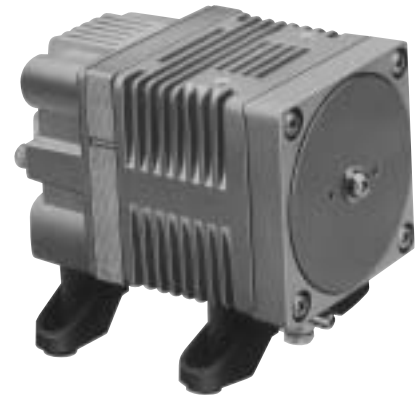


LINEAR

Ac0110

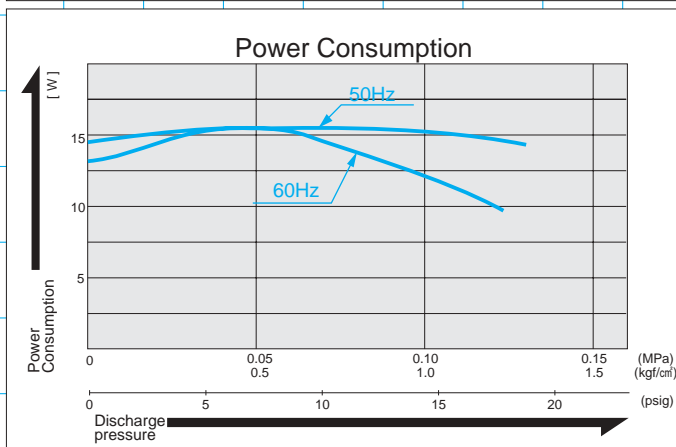
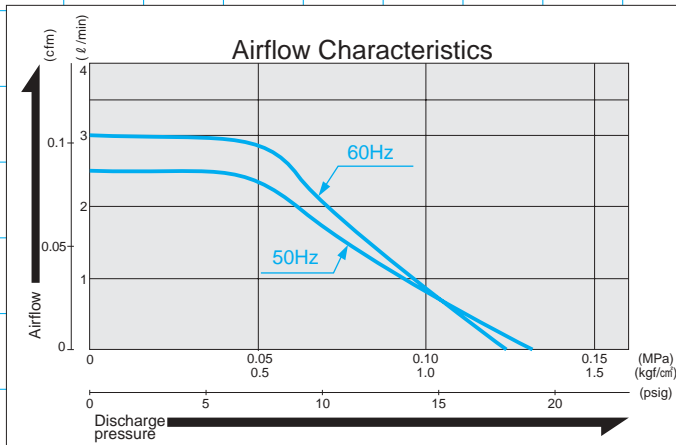


MOTOR FREE
PISTON SYSTEM



Airflow & Power Consumption

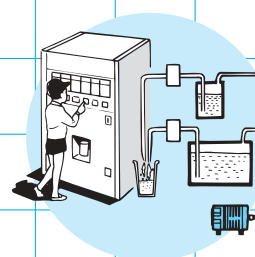
Specifications



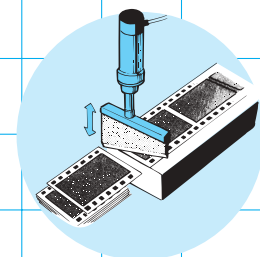
	(SI)	(EURO)	(U.S.A.)
Rated Pressure	0.1 MPa {1.0 kgf/cm²}	1.0 bar	14.2 psig
Rated Airflow	0.8 l/min		0.028 cfm
Rated Voltage	115 V, AC or 230 V, AC		
Maximum Pressure	0.12 MPa {1.2 kgf/cm²}	1.2 bar	17.1 psig
Power Consumption	12 W or 15 W		
Rated Frequency	60 Hz or 50 Hz		
Life Expectancy	3,000 hours		
Outlet	6 mm O.D. hose nipple		
Duty Cycle	30 minutes		
Coil Insulation Class	E or its equivalent (JETL) and B for UL		
Mounting Dimensions	48 (L) x 62 (W) mm		
Gross Weight	0.7 kg		1.54 Lbs.
Leadwire Length	200 mm		7-7/8"

* Life expectancy is the expected accumulated period of time during which the compressor will maintain the above specifications. Contact your supplier for details of the conditions of use under which the values and numbers stated herein are maintained.

Application Examples



Automatic Dispenser



Film Cutter

Sketch Drawing and Mounting Dimensions Diagram (mm)

