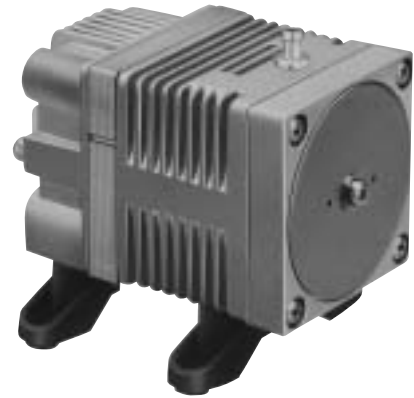


# LINEAR

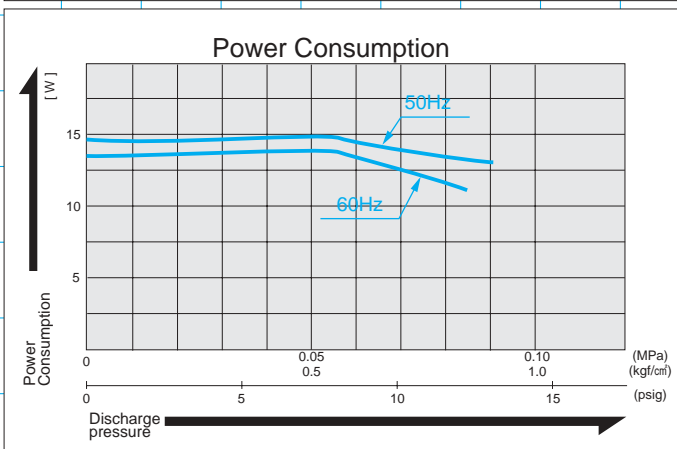
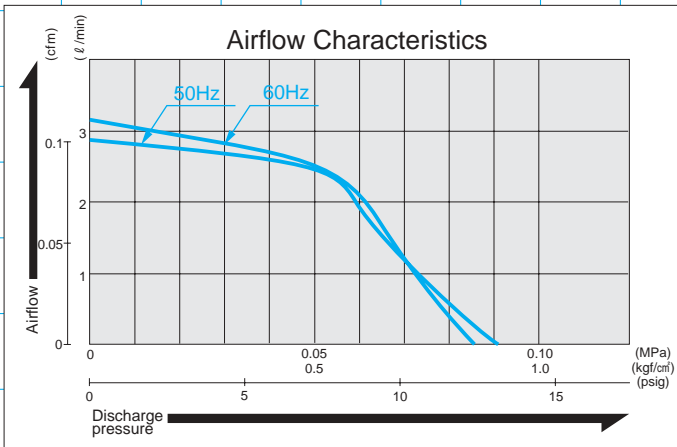
## Ac0105



MOTOR FREE  
PISTON SYSTEM



### Airflow & Power Consumption



### Specifications

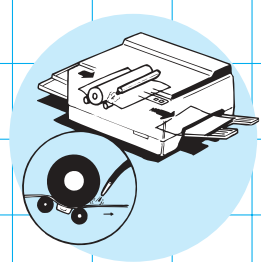
	(SI)	(EURO)	(U.S.A.)
Rated Pressure	0.05 MPa {0.5 kgf/cm <sup>2</sup> }	0.5 bar	7.1 psig
Rated Airflow	2.5 l/min		0.088 cfm
Rated Voltage	115 V, AC or 230 V, AC		
Maximum Pressure	0.08 MPa {0.8 kgf/cm <sup>2</sup> }	0.8 bar	11.4 psig
Power Consumption	14 W or 15 W		
Rated Frequency	60 Hz or 50 Hz		
Life Expectancy	3,000 hours		
Outlet	6 mm O.D. hose nipple		
Duty Cycle	60 minutes		
Coil Insulation Class	E or its equivalent (JETL) or B for UL		
Mounting Dimensions	48 (L) x 62 (W) mm		
Gross Weight	0.7 kg		1.54 Lbs.
Leadwire Length	200 mm		7-7/8"

\* Life expectancy is the expected accumulated period of time during which the compressor will maintain the above specifications. Contact your supplier for details of the conditions of use under which the values and numbers stated herein are maintained.

### Application Examples



Saline Water Splasher



Copy Paper Separator

### Sketch Drawing and Mounting Dimensions Diagram (mm)

